

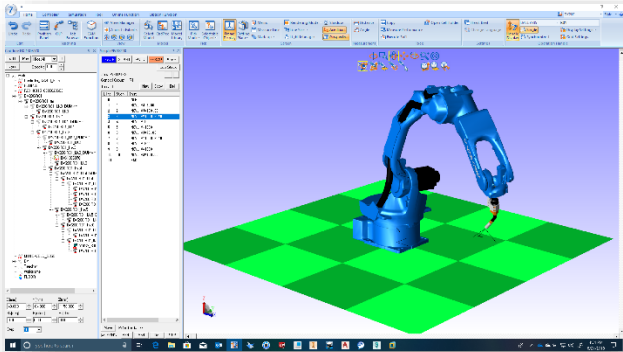
This document captures ideas, experiences, and informal recommendations from the Yaskawa Partner Support team. It is meant to augment – not supersede manuals or documentation from motoman.com. Please contact the Partner Support team at partnersupport@motoman.com for updates or clarification.

MotoSim Touch for YRC1000...Install and Usage Tips

Introduction

MotoSim Touch is a comprehensive hardware and software system that offers a hands-on experience. With a standard Programming Pendant at your disposal, you can now take control of the computer running MotoSimEG-VRC.

This innovative product not only acquaints you with robot operations in a virtual environment but also provides an immersive opportunity to learn the intricacies of the Programming Pendant through direct interaction.



This document captures ideas, experiences, and informal recommendations from the Yaskawa Partner Support team. It is meant to augment – not supersede manuals or documentation from motoman.com. Please contact the Partner Support team at partnersupport@motoman.com for updates or clarification.

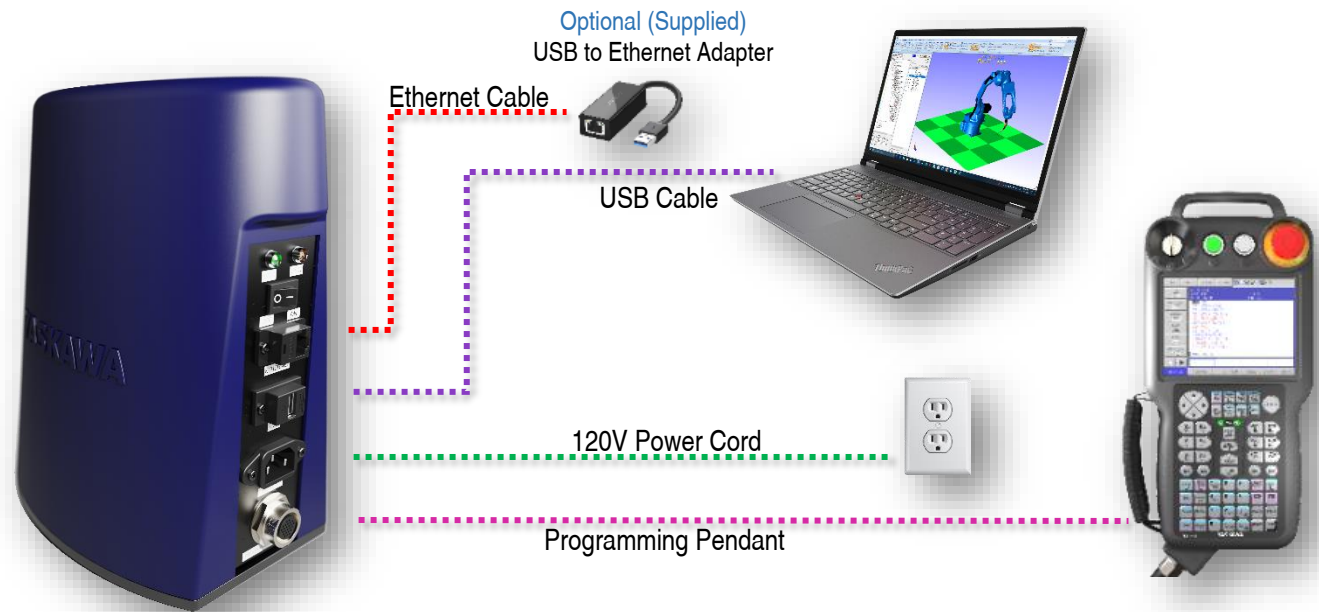
Installation

Hardware needed:

- Windows 10 or 11
- Intel Core i7 CPU
- Dedicated professional Graphics Card (Nvidia Quadro, RTX)
- 16GB Main Memory
- 4GB of free Storage space

Hardware Installation:

1. Unpack the MotoSim Touch Module unit.
2. Power cord – Connects between MotoSim Touch Module and a 110-120V wall plug.
3. USB cable - Connects between MotoSim Touch Module and the computer.
4. Ethernet cable - Connects between MotoSim Touch Module and the computer.
5. Programming Pendant cable - Connects between MotoSim Touch Module and Programming Pendant or into optional Ethernet-to-USB adapter.
6. If required, mount the MotoSim Touch Module to a flat surface using the included mounting plate and hardware. Refer to *Appendix A* for hole pattern.



This document captures ideas, experiences, and informal recommendations from the Yaskawa Partner Support team. It is meant to augment – not supersede manuals or documentation from motoman.com. Please contact the Partner Support team at partnersupport@motoman.com for updates or clarification.

MotoSim Touch Module Call Outs

Yellow LED - 24V Power Supply Indicator

Green LED – 5V Power Supply Indicator

Power ON/OFF Rocker Switch

Ethernet Cable Connection

USB Cable Connection

120V Power Cord Connection

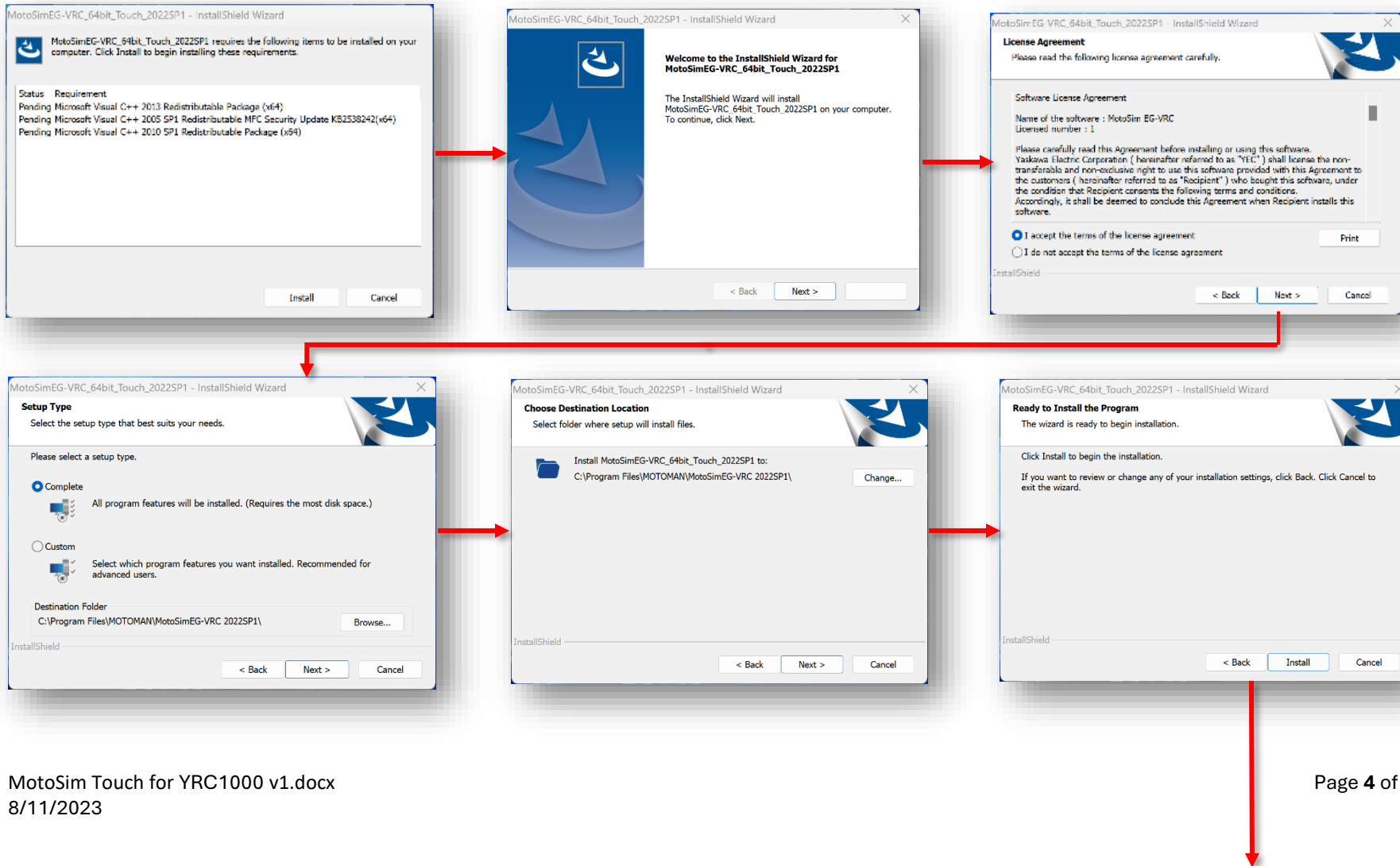
Programming Pendant Cable Connection



This document captures ideas, experiences, and informal recommendations from the Yaskawa Partner Support team. It is meant to augment – not supersede manuals or documentation from motoman.com. Please contact the Partner Support team at partnersupport@motoman.com for updates or clarification.

Installing MotoSim Touch

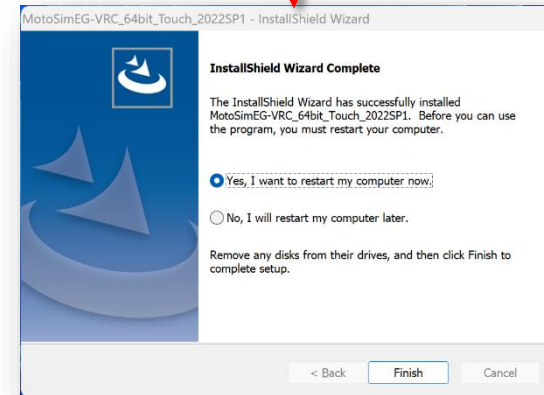
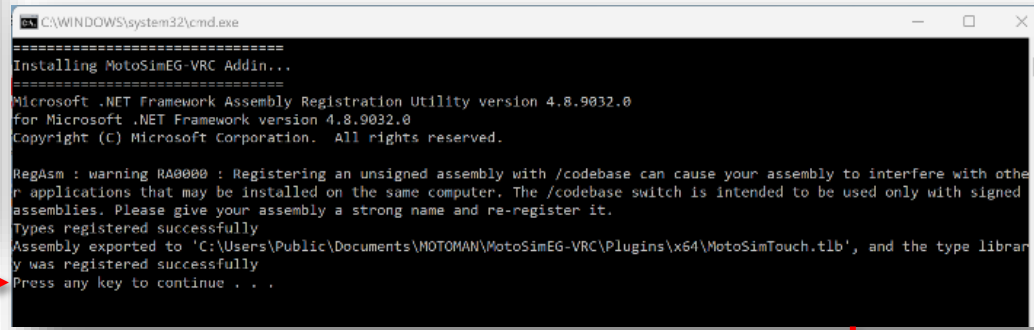
Run the Executable and follow the prompts to install all components.



This document captures ideas, experiences, and informal recommendations from the Yaskawa Partner Support team. It is meant to augment – not supersede manuals or documentation from motoman.com. Please contact the Partner Support team at partnersupport@motoman.com for updates or clarification.



Press any key on the keyboard to install the Touch Addin

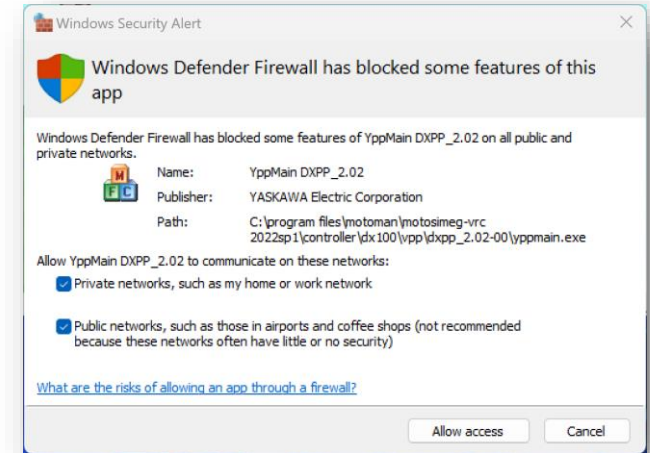


This document captures ideas, experiences, and informal recommendations from the Yaskawa Partner Support team. It is meant to augment – not supersede manuals or documentation from motoman.com. Please contact the Partner Support team at partnersupport@motoman.com for updates or clarification.

Firewall Settings

Due to many organizations instituting tighter security recommendations, it is recommended to not turn off the Windows firewall. Instead when opening a simulation, with a controller, accept the more-limited security pass-thru.

However, if the computer is disconnected from any form of network access, the next few pages show how to turn the firewall off.

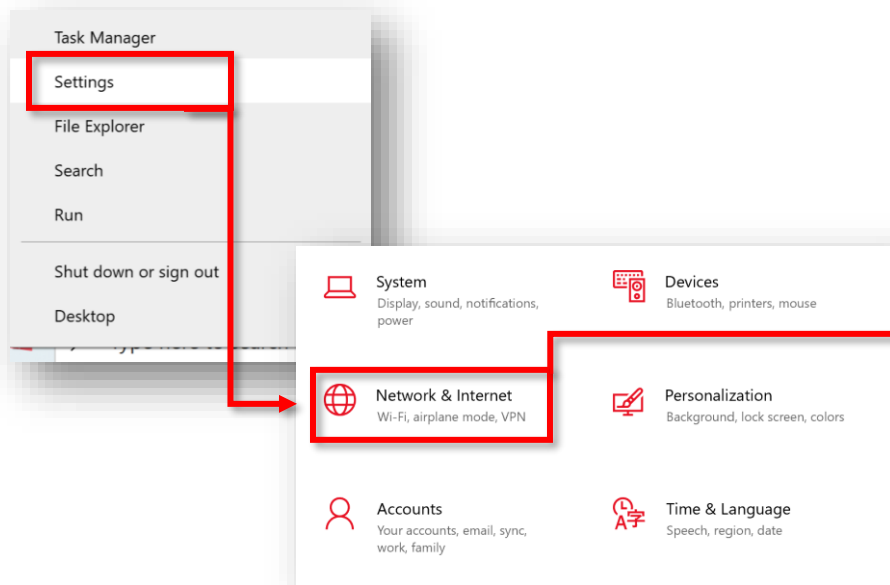


Check each Network (Domain, Private, & Public)

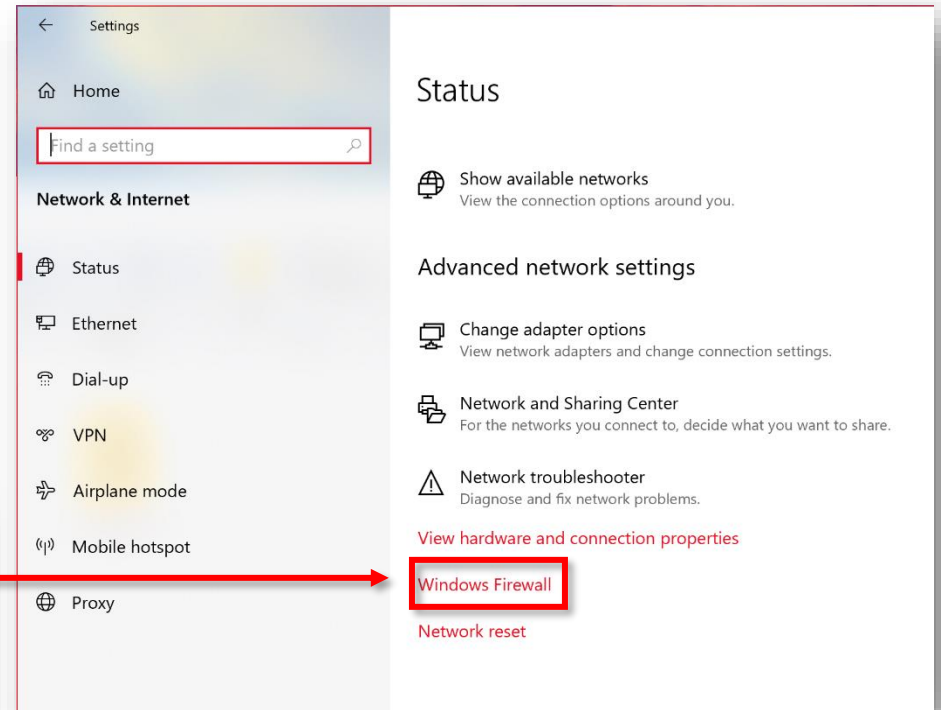
This document captures ideas, experiences, and informal recommendations from the Yaskawa Partner Support team. It is meant to augment – not supersede manuals or documentation from motoman.com. Please contact the Partner Support team at partnersupport@motoman.com for updates or clarification.

Firewall Settings Windows 10

Right-click on the Start Menu and select **Settings**

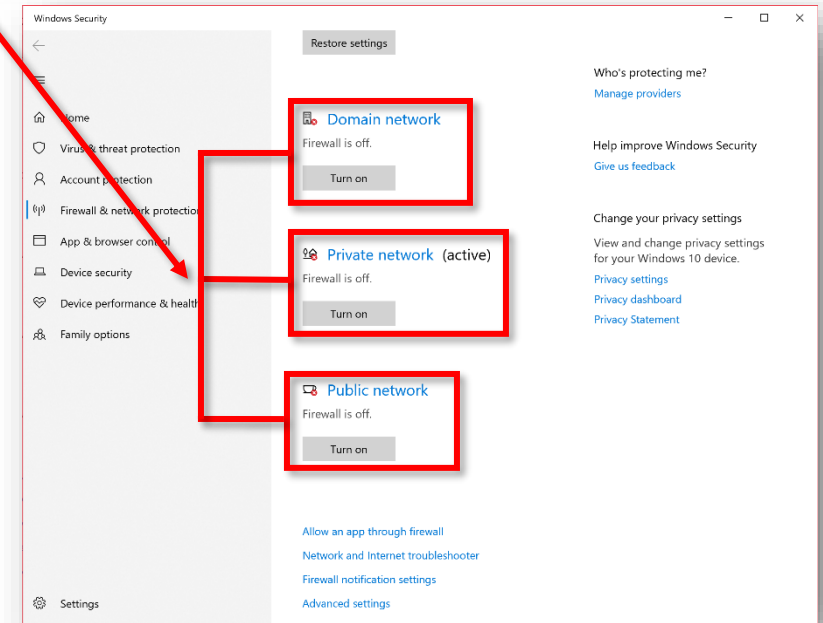
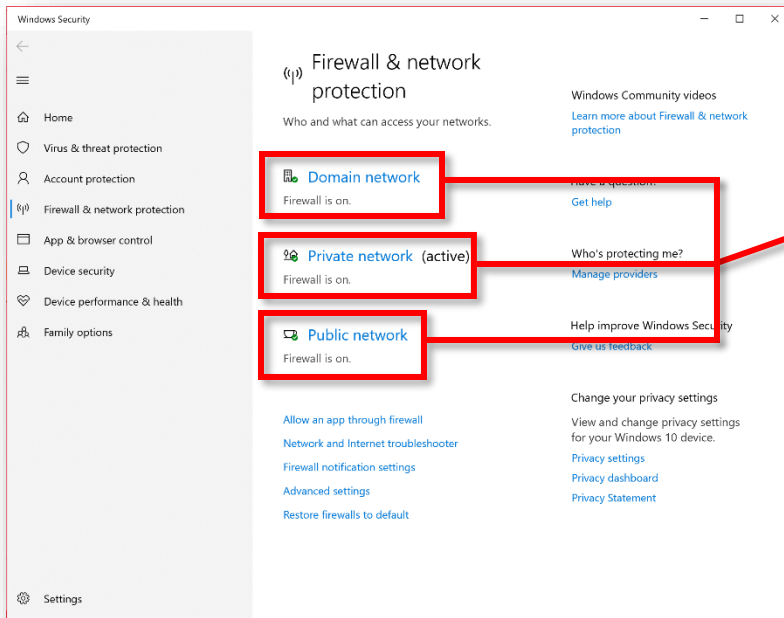


Select **Network & Internet**



Select **Windows Firewall**

This document captures ideas, experiences, and informal recommendations from the Yaskawa Partner Support team. It is meant to augment – not supersede manuals or documentation from motoman.com. Please contact the Partner Support team at partnersupport@motoman.com for updates or clarification.



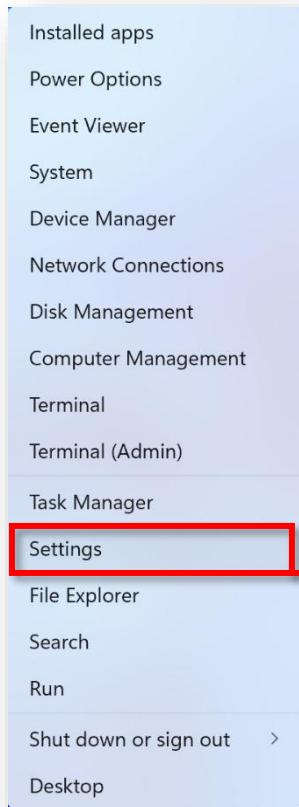
Select each network (Domain, Private, & Public) and turn it off

This document captures ideas, experiences, and informal recommendations from the Yaskawa Partner Support team. It is meant to augment – not supersede manuals or documentation from motoman.com. Please contact the Partner Support team at partnersupport@motoman.com for updates or clarification.

Firewall Settings

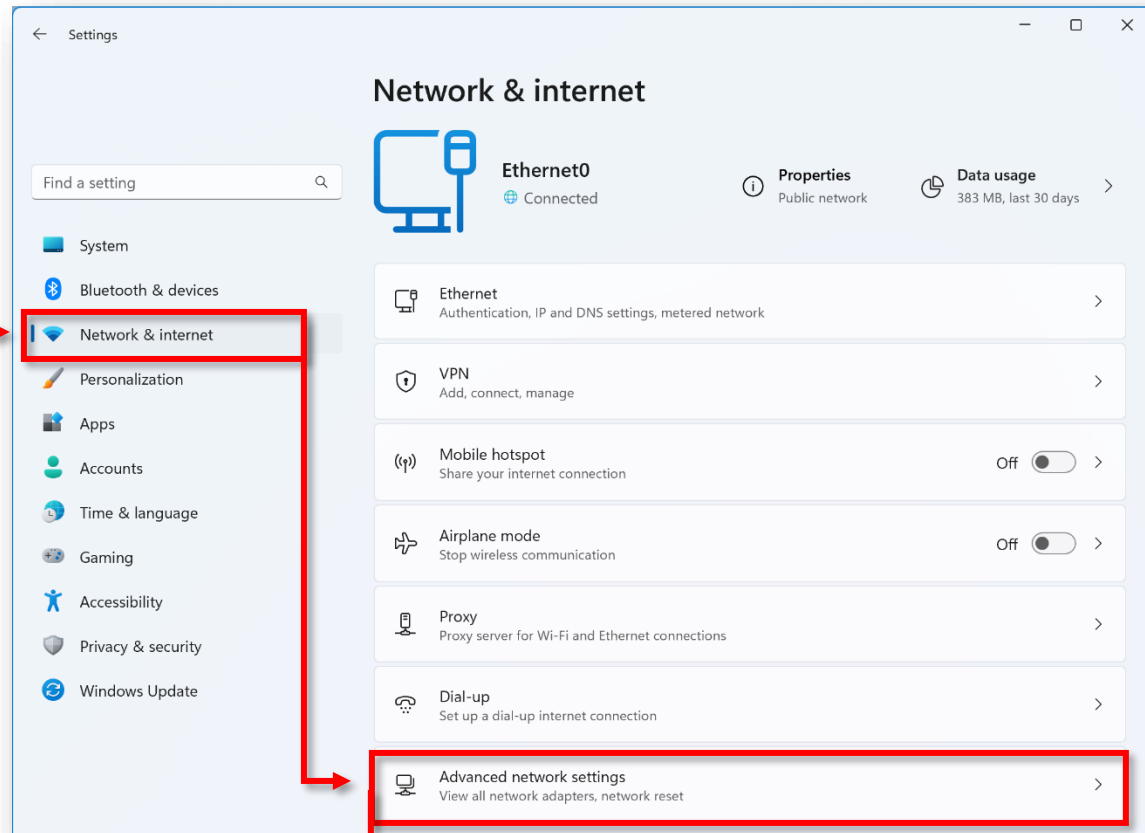
Windows 11

Right-click on the Start Menu and select **Settings**

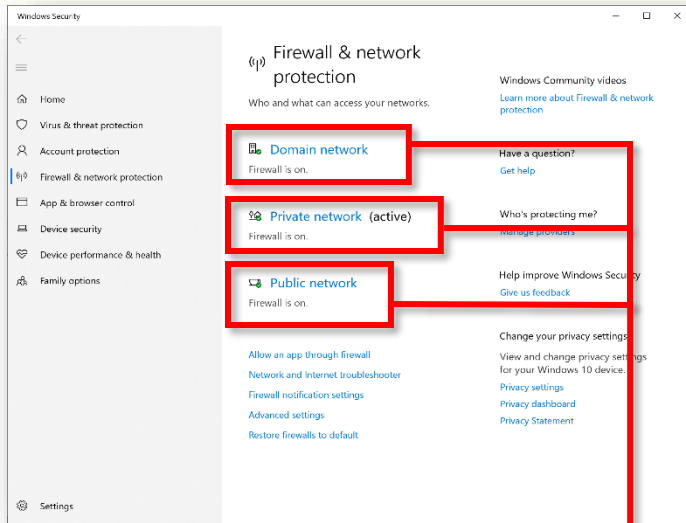


Select **Network & Internet** in the setting window

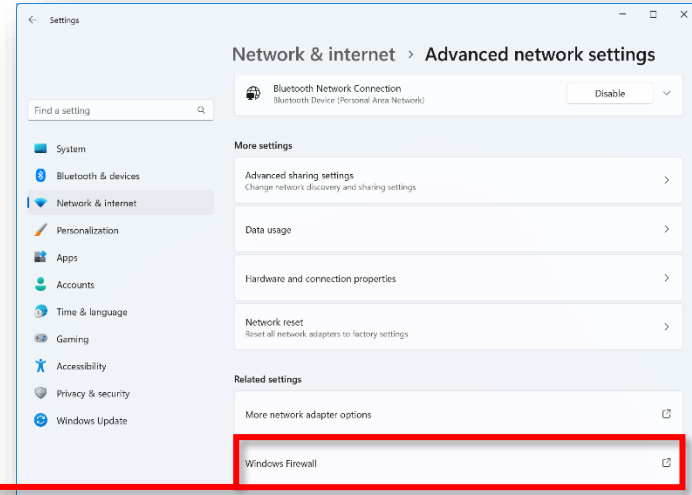
Select **Advanced network settings**



This document captures ideas, experiences, and informal recommendations from the Yaskawa Partner Support team. It is meant to augment – not supersede manuals or documentation from motoman.com. Please contact the Partner Support team at partnersupport@motoman.com for updates or clarification.



Select Windows Firewall



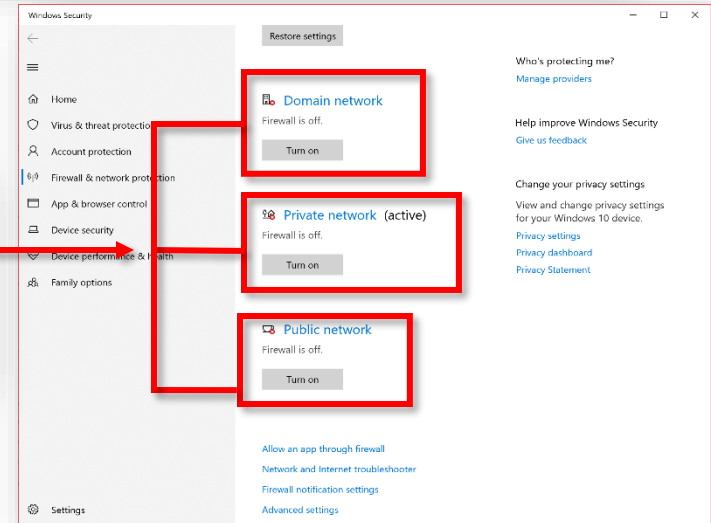
Select each network (Domain, Private, & Public) and turn it off

Microsoft Defender Firewall
Helps protect your device while on a domain network.

Domain firewall is off. Your device may be vulnerable.

Off

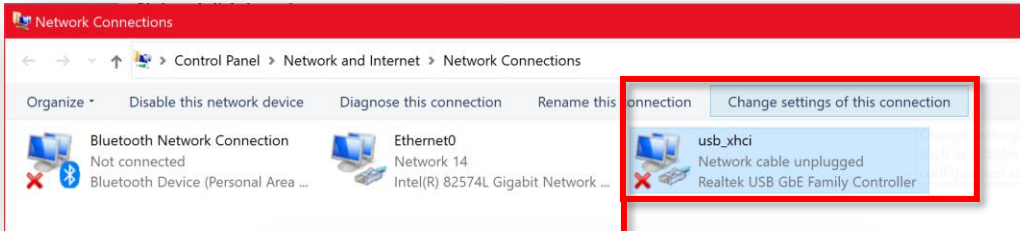
Move Slider to **Off**



Firewalls are now OFF

This document captures ideas, experiences, and informal recommendations from the Yaskawa Partner Support team. It is meant to augment – not supersede manuals or documentation from motoman.com. Please contact the Partner Support team at partnersupport@motoman.com for updates or clarification.

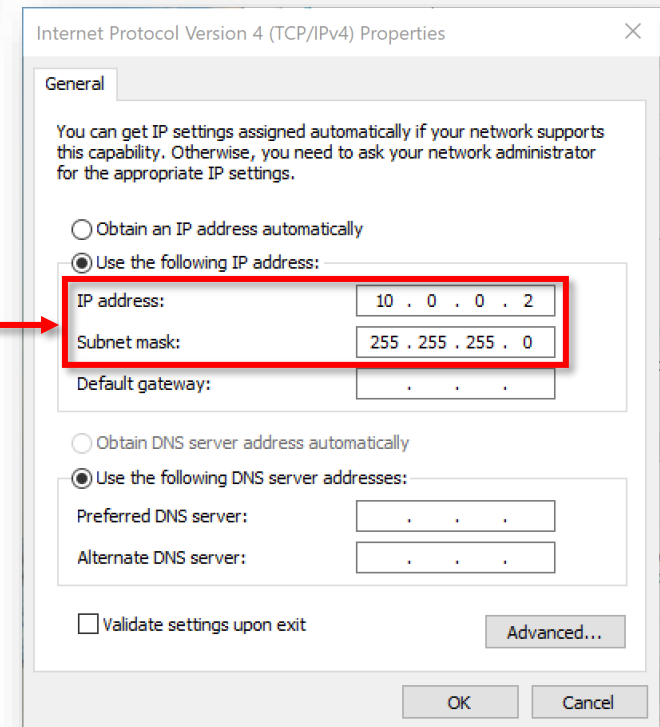
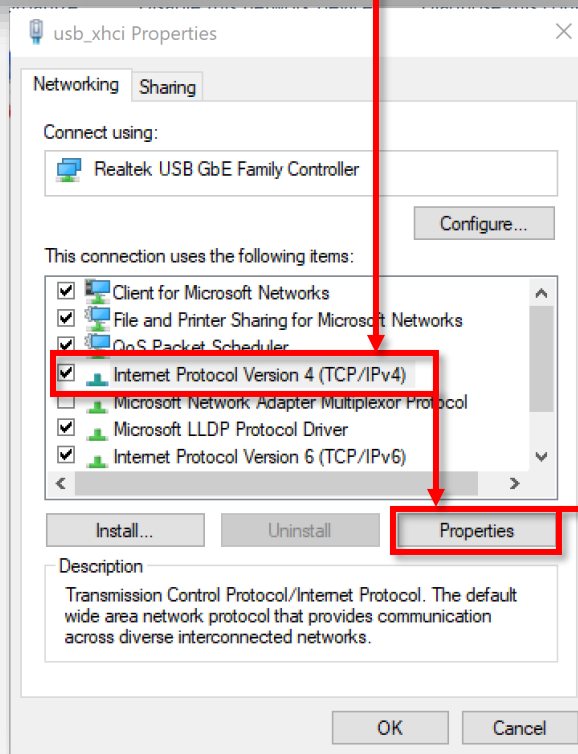
Select the ethernet or USB adapter and **Change settings of this connection**



Fill in the IP address (10.0.0.2) and the Subnet mask (255.255.255.0)

Select **OK** to confirm the change

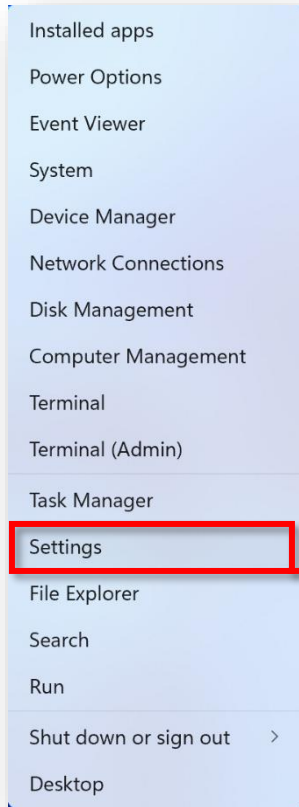
Select the **IPv4** item and then select **Properties**



This document captures ideas, experiences, and informal recommendations from the Yaskawa Partner Support team. It is meant to augment – not supersede manuals or documentation from motoman.com. Please contact the Partner Support team at partnersupport@motoman.com for updates or clarification.

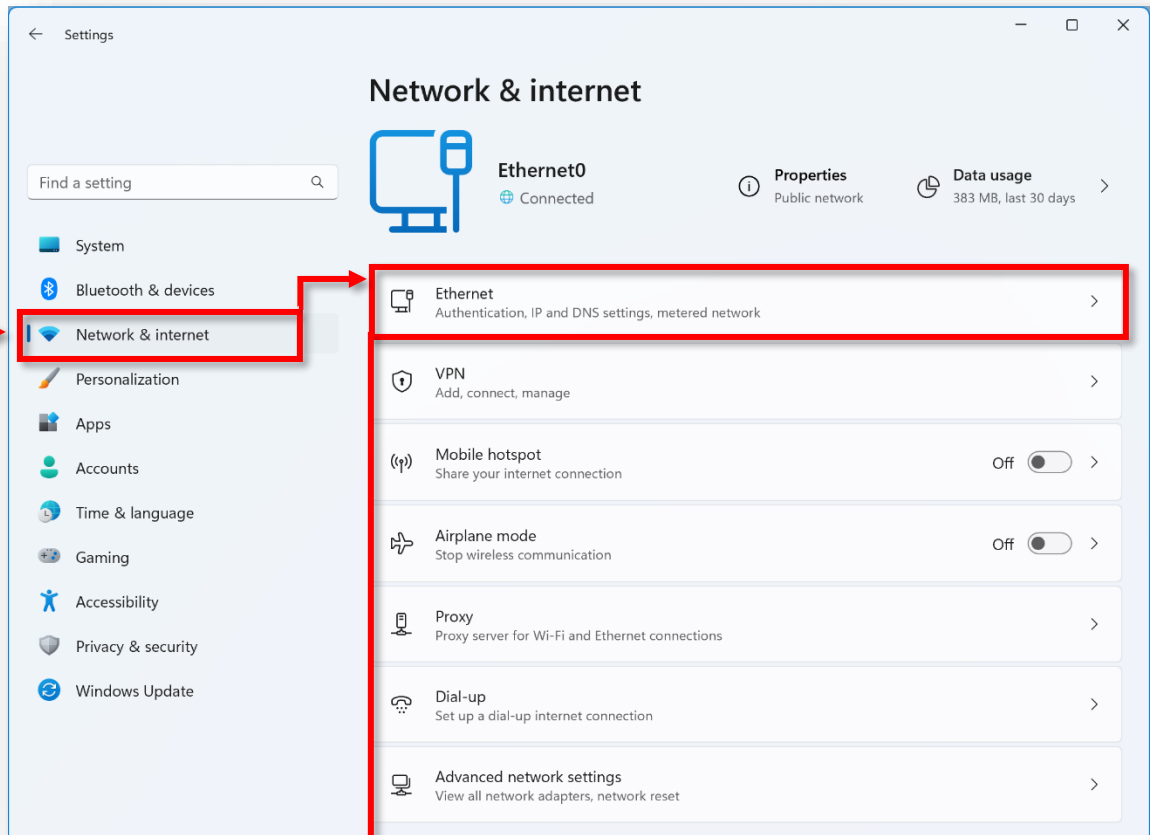
Windows 11 IP Address Settings

Right-click on the Start Menu and select **Settings**

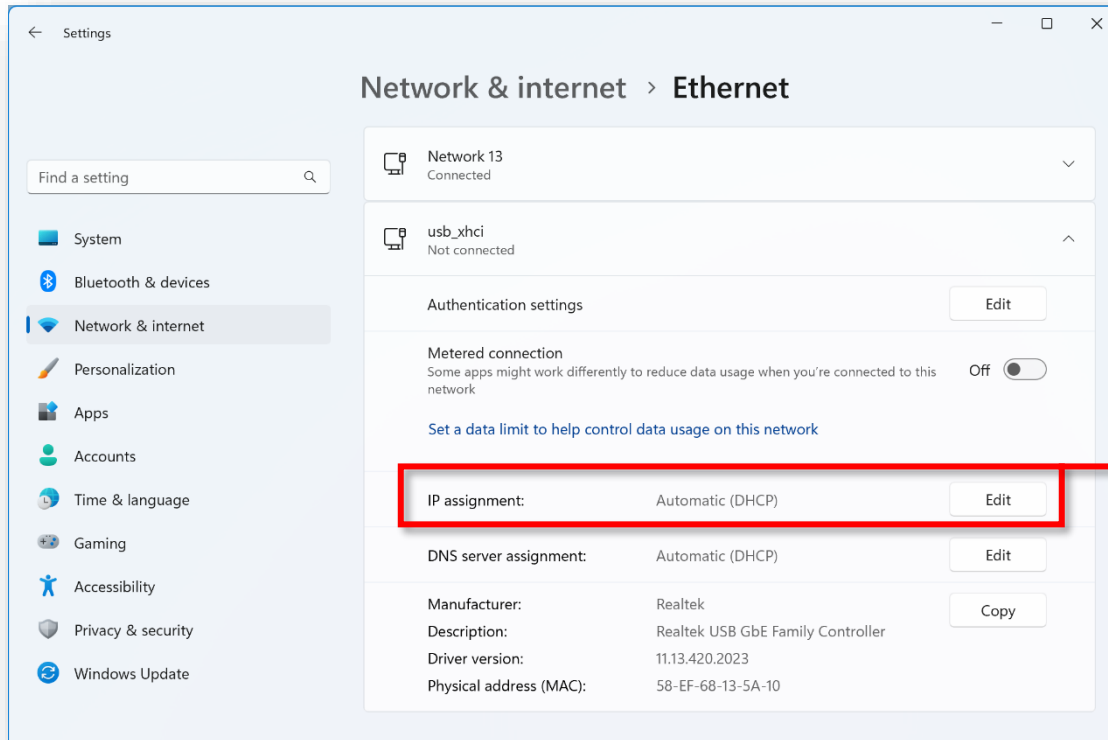


Select **Network & Internet** in the setting window

Select **Ethernet**

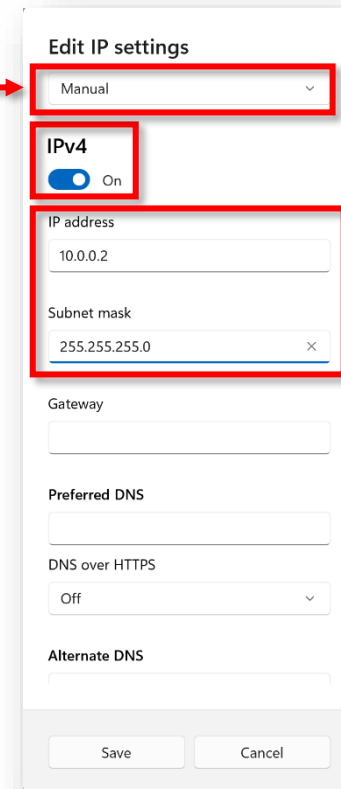


This document captures ideas, experiences, and informal recommendations from the Yaskawa Partner Support team. It is meant to augment – not supersede manuals or documentation from motoman.com. Please contact the Partner Support team at partnersupport@motoman.com for updates or clarification.



Select the **Edit** button for the **IP assignment**

1. Change from Automatic to **Manual**
2. Turn on **IPv4**
3. Fill in the IP address (10.0.0.2)
4. Fill in the Subnet Mask (255.255.255.0)
5. Select **Save** to confirm the change



This document captures ideas, experiences, and informal recommendations from the Yaskawa Partner Support team. It is meant to augment – not supersede manuals or documentation from motoman.com. Please contact the Partner Support team at partnersupport@motoman.com for updates or clarification.

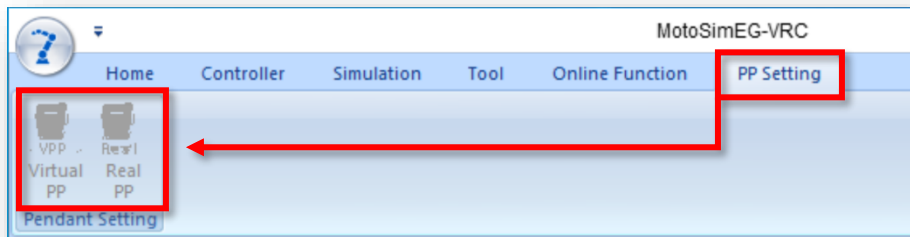
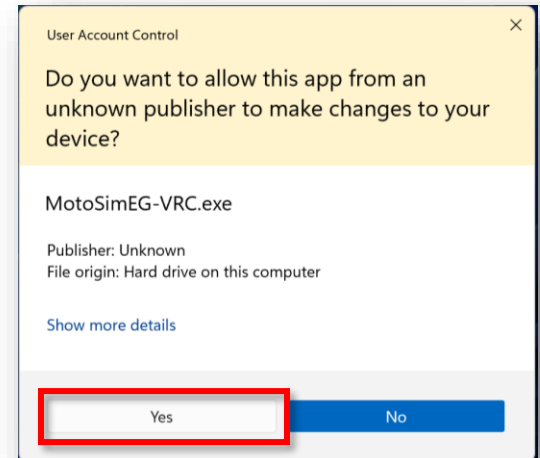
Running MotoSim Touch

Note:

Each Windows User account will need to have local administrator privileges turned on, or the user will need to know the local machine administrator password when running MotoSim Touch. The application is preconfigured to run with elevated administration rights to make use of the Touch module.

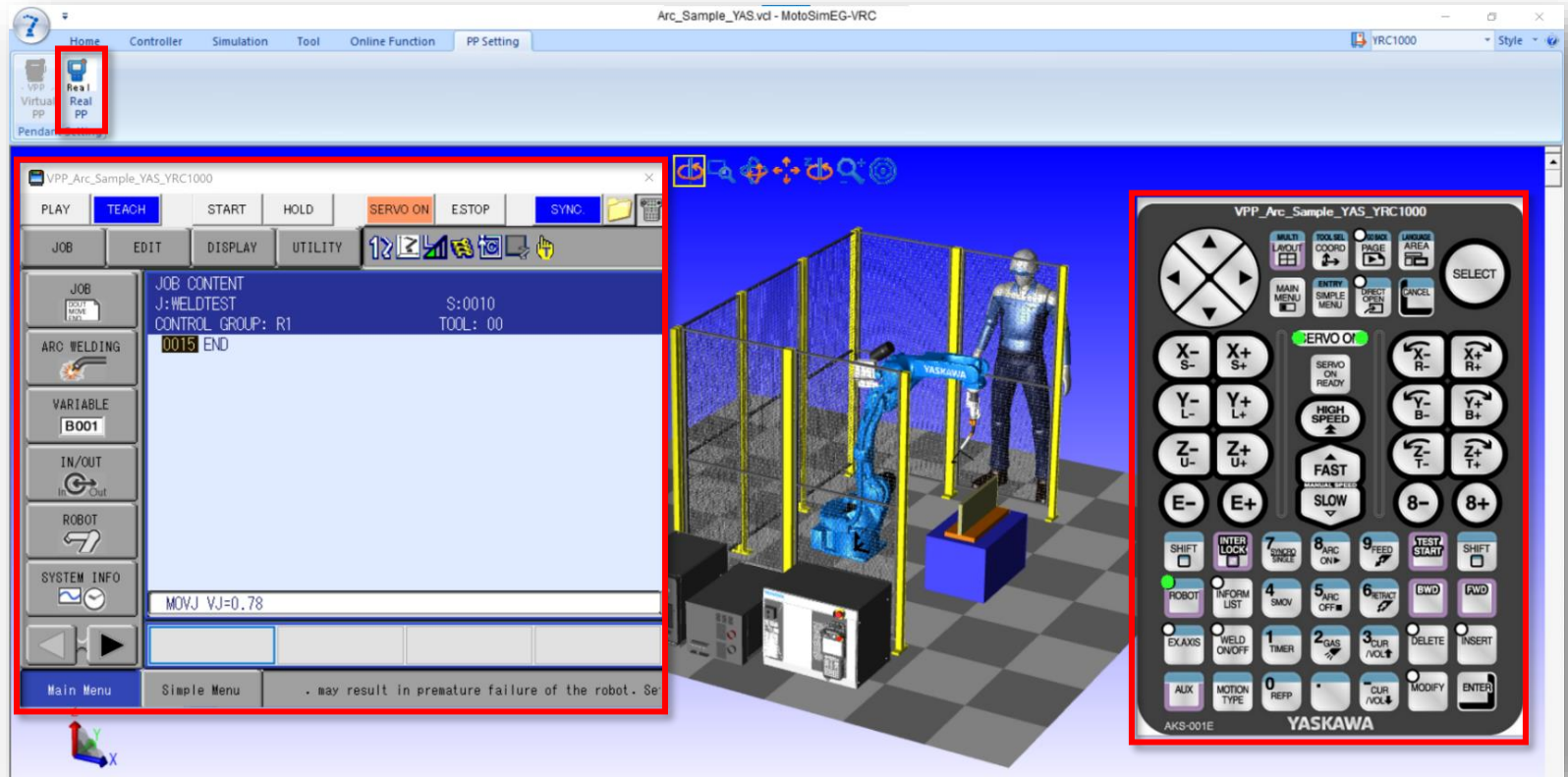
After selecting **YES** on the **User Account Control** screen MotoSim Touch will open with a blank screen.

Note the PP Setting tab and the grayed-out icons for the Virtual Pendant and Real Pendant.



This document captures ideas, experiences, and informal recommendations from the Yaskawa Partner Support team. It is meant to augment – not supersede manuals or documentation from motoman.com. Please contact the Partner Support team at partnersupport@motoman.com for updates or clarification.

When loading a YRC1000 or YRC1000micro controller the simulation will load with the Virtual Pendant Active and the Real Pendant Icon Visible.



The GRAYED-OUT icon shows the active selection

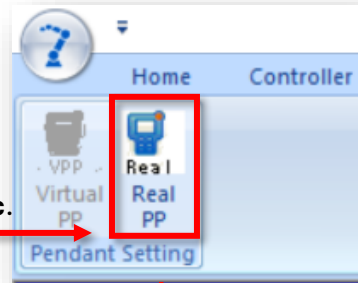
This document captures ideas, experiences, and informal recommendations from the Yaskawa Partner Support team. It is meant to augment – not supersede manuals or documentation from motoman.com. Please contact the Partner Support team at partnersupport@motoman.com for updates or clarification.

Power ON the Touch Module

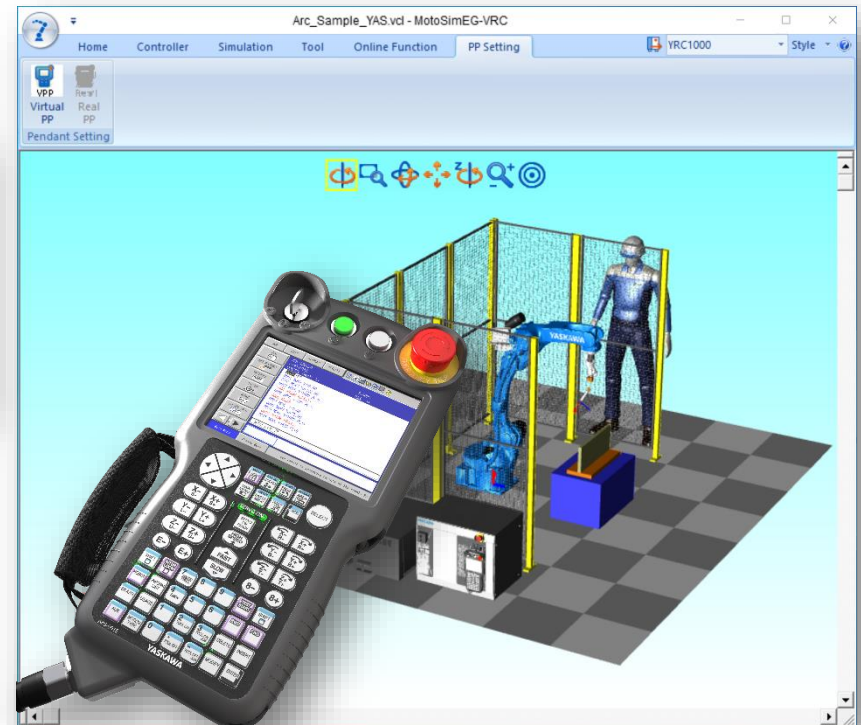


Wait about 8 sec.

Select Real PP



With the Real Pendant active, the Virtual Pendant disappears off the screen and the **Virtual PP** icon is

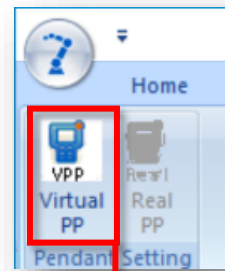


The GRAYED-OUT icon shows the active selection

This document captures ideas, experiences, and informal recommendations from the Yaskawa Partner Support team. It is meant to augment – not supersede manuals or documentation from motoman.com. Please contact the Partner Support team at partnersupport@motoman.com for updates or clarification.

Special Note on Toggling between the Real Pendant and the Virtual Pendant

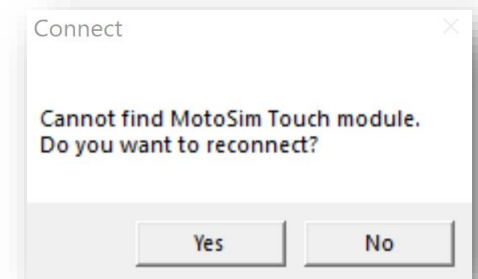
Switching back to the Virtual Pendant is easy enough by just selecting **Virtual PP**. However, if the user plans to toggle between the two types of pendants it is important to turn the power off on the Touch Module before transitioning to the real pendant again.



This document captures ideas, experiences, and informal recommendations from the Yaskawa Partner Support team. It is meant to augment – not supersede manuals or documentation from motoman.com. Please contact the Partner Support team at partnersupport@motoman.com for updates or clarification.

Usage Tips

- When connecting to the Real Pendant and an error message “Cannot Find MotoSim Touch Module” appears, verify that the USB cable is properly connected to both the computer and Touch Module.
- DO NOT restart the Touch Module when MotoSim is in Real Pendant mode or is connecting to the real pendant. MotoSim will need to be restarted.
 - Instead, toggle back to the Virtual Pendant first
- Motosim Touch must be run with elevated admin privileges. This is on by default with the desktop shortcut.
 - If run from the taskbar or File Explorer, and the admin setting is not used then MotoSim will stop running when connecting to the real pendant.
- When creating a new YRC1000/YRC1000Micro cell, the real pendant cannot be connected until MotoSim, itself, has been rebooted.
 - Rebooting the controller within the software and/or restarting the Touch Module does not work.
- Unplugging the USB in real pendant mode - MotoSim will need to be restarted.
- Unplugging the Ethernet cable in real pendant mode will interrupt communication until the Touch Module is restarted.
- A simulation with more than 1 controller (DR2C, TR3C) will only allow the first controller to connect to the real pendant.
- If VRC.bat needs to be used, it must be run as administrator.
- If the Touch Module is left on for 6min before the pendant is connected to MotoSim, acknowledge the error, and select the connect button on the pendant. Then, select Real Pendant Icon in MotoSim, to reconnect properly.



This document captures ideas, experiences, and informal recommendations from the Yaskawa Partner Support team. It is meant to augment – not supersede manuals or documentation from motoman.com. Please contact the Partner Support team at partnersupport@motoman.com for updates or clarification.

Appendix A

Mounting Plate

Here is the hole pattern for mounting the MotoSim Touch adapter to a flat surface (Desk).

- Holes marked "A" secures the unit to the desk.
- Holes marked "B" secures the bracket to the unit.

